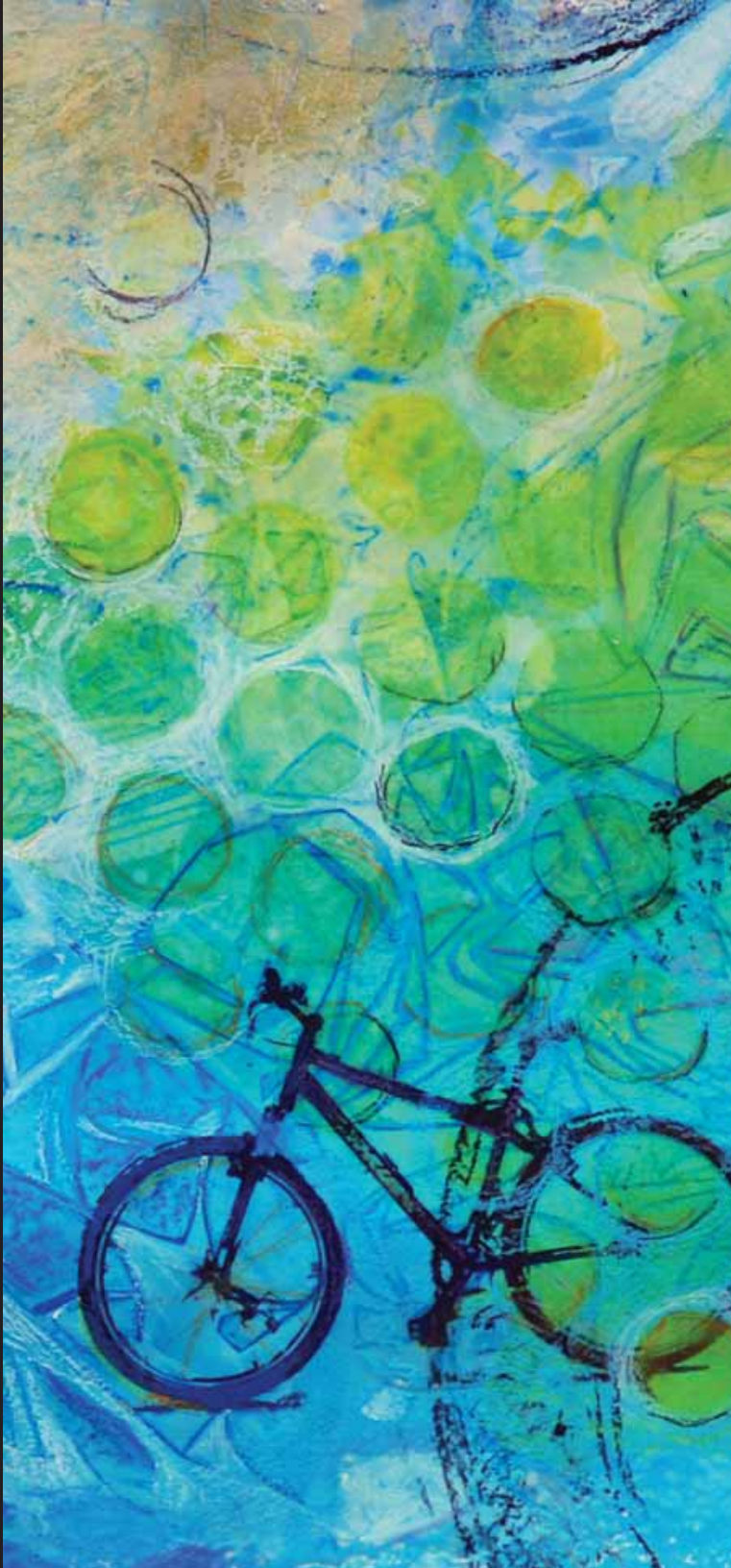


2011-2012

"Bike" by Arlissa Vaughn



Shared
Visions
Art Exhibit



Eye Care Center
SOUTHERN CALIFORNIA
COLLEGE OF OPTOMETRY

Dear Patron of the Arts,

Thank you for participating in this special Shared Visions Art Exhibit. We are excited to present our seventh art show at the Eye Care Center, Southern California College of Optometry, featuring 60 visually impaired and totally blind artists. Ninety innovative works of art by these blind and legally blind, national and international artists, will be on display at the Eye Care Center through mid-August, 2012 and another ten works of art will be located for the year at various NVISION Laser Eye Centers throughout Southern California.

This exhibition celebrates the artistic accomplishments of artists who continue to create in a visual realm. The exhibition highlights the ability, talents and achievements of these incredible and inspirational artists. The Walls Low Vision Rehabilitation Center will offer vision enhancement technology to low vision patrons of the arts for aid in viewing the exhibit.

Going forward, each year, the Shared Visions Art Exhibit will have a special focus area featuring one eye condition that causes low vision. This year's special educational focus is on Albinism. Please be sure to look for the featured area in the Exhibit that will have educational information about Albinism, as well as artwork from and photos of children with Albinism in Africa.

If you would like information regarding the purchase of artwork or to keep up-to-date with the exhibit throughout the year, visit www.sccoeyecare.com/sharedvisions or call Arlene at 714.992.7865.



Rebecca Kammer, O.D.
Chief, Mary Ann Keeverline Walls
Low Vision Rehabilitation Center
Eye Care Center
Southern California College of Optometry



Arlene Kaye, SCMD
Director of Marketing, SCCO
Curator, Shared Visions
Art Exhibit
Southern California College of Optometry

ABOUT THE COVER

Arlissa Vaughn, who resides in Seal Beach, CA, was diagnosed with retinitis pigmentosa six years ago. Having this visual impairment has made her realize how fragile humanity can be, but it has also fueled an optimistic and hopeful side of her. She tries to portray this in her artwork by showing the complex journey and interactions that occur in humanity, individuals and nature. Arlissa uses a variety of different mediums and often times ends up creating an art piece with mixed mediums.

The Eye Care Center at SCCO and our Shared Visions Sponsors congratulate all of the participating artists in this year's exhibit:

Kathy Ankelein	Rosa Gutierrez	Barbara Romain
Kathy Austin	Rochelle Haagen	Anthony Cameron Sanaee
Ramona Bacovic	Wayne Heidle	Albert Schmiege
Andrew Bedo	Isaiah Hinnerichs	Mathew Schrieber
Frank Burns	Eva Horne	Anne Shifflett
Aileen Caparaz	Evangeline Jimenez	Antonio Smart
Jud Capell	Toni Johnson	Sam Smith
Bill Carlson	Arnold Karlson	Bronwen Tagoe
Doris Carlton	Stanley Katapka	Barbara Talbert
Stella De Genova	Kathy Kennedy	Michael Tickenoff
Nora Devane	Jeffrey Kneut	Maria Vargas
Sandra Gallegos	Joe Landau	Arlissa Vaughn
Andrea Garcia	Virginia Lantry	Lourdes Wagner
Sarkis Gekchyan	John D. Lewis	Donna Wallace
Liora Goldman	Anthony Martinez	Kurt Weston
Daniel Gonzalez	Sharon Matson	Helen Wiese
Esther Gonzalez	Okja Nancy Min	Cherry Winchester
Charlie Grover	Amy Monthei	Jerome Wright Jr.
Susan Joy Gustafson	Mari Newman	Nicholas Zaffarese
	Jessica Overturf	

Most of the art can be purchased by contacting Arlene Kaye at 714.992.7865 or akaye@scco.edu. 100% of artwork sales will go directly to the artists. *NFS= Not for Sale*

Additional artwork on display at NVision Laser Eye Centers throughout Southern California.

NVISION

LASER EYE CENTERS | THE EYE DOCTORS' #1 CHOICE

LOVING LIFE WITH LASIK



Financing Options Include:
\$0 Down, 0% Interest and
\$99/Month Programs

We honor all major insurance discounts.

Tyler Hoechlin
Actor
NVISION Patient

CALL TO BOOK YOUR FREE CONSULTATION | 877-91-NVISION

NEWPORT BEACH

3501 Jamboree Road Suite 100
Newport Beach, CA 92660
P 949.854.7400
F 949.854.7331

CAMARILLO

771 East Dally Dr. Suite 245
Camarillo, CA 93010
P 805.437.7150
F 805.437.7160

LA JOLLA

3655 Nobel Drive Suite 130
San Diego, CA 92122
P 858.558.6000
F 858.558.6555

ONTARIO

3155-D Sedona Court
Ontario, CA 91764
P 909.605.1975
F 909.974.0356

LAGUNA HILLS

24022 Calle de la Plata, Suite 300
Laguna Hills, CA 92653
P 949.951.1457
F 949.768.8902

FULLERTON

2575 Yorba Linda Blvd.
Fullerton, CA 92831
P 714.257.0560
F 714.257.0540

MURRIETA

40700 California Oaks Rd.
Murrieta, CA 92562
P 951.696.4129
F 951.696.4249

PALM DESERT

72-650 Fred Waring Suite 106
Palm Desert, CA 92260
P 760.674.8000
F 760.836.0782

TORRANCE

23550 Hawthorne Blvd. Suite 220
Torrance, CA 90505
P 310.784.2020
F 310.784.2021

www.NVISIONCenters.com



KATHLEEN ANKELEIN

Optic Neuropathy
Fountain Valley, CA

Ms. Ankelein believes that her tunnel vision has allowed her to enjoy and notice art a little more than before. Since her blindness, she has been inspired by Mary Engelbreit to create colorful and whimsical artwork.

Moon Struck

NFS



KATHY AUSTIN

Congenital Cataracts,
Nystagmus, and Crossed Eye
Calgary, Canada

Ms. Austin has been seeing the world with limited details since birth due to her congenital cataracts and nystagmus. She uses photography as a way to fill in the details that her eyes cannot see. With pictures, she can bring the faraway world closer to her. Her favorite subjects to photograph are animals and landscapes.

Alien Landscape

\$120



RAMONA BAKOVIC

Diabetic Retinopathy
Norwalk, CA

Ms. Bakovic started having vision problems at the age of 40. She took part in the mosaics class offered by the Braille Institute of America. After the course, she was able to express herself and her imagination through the use of mosaics.

Kokapilla Dream Catcher **\$500**
Keep on Trying NFS



ANDREW BEDO

Ischemic Neuropathy of
the Optic Nerve
Rosenberg, TX

Mr. Bedo started losing his vision in 2002. This has altered the way he performed certain tasks, such as photography. He now engages his other senses to fully see and understand an object or scene. Photography is more than an art, it is also a therapeutic affirmation of his ability to accommodate to his vision loss. For Mr. Bedo, "photography IS seeing."

Susen's Lillies **\$250**
In the Wind \$250



FRANK BURNS

Ischemic Optic Neuropathy
Granada Hills, CA

Mr. Burns has kept an optimistic outlook in art and in life despite his vision loss. He uses his vision loss as an opportunity to try something new. He defines art as an experiment and through his adventures, he has discovered an art technique that he enjoys.

Katty, Katty, Katty

NFS



AILEEN CAPARAZ

Retinopathy of Prematurity
Pasadena, CA

Ms. Caparaz is inspired by the nature that surrounds her. Her visual impairment has affected her ability to see details ever since birth. She uses her imagination to fill in the missing pieces. For a 3D effect, she adds paper mache to her paintings.

Panda

NFS



JUD CAPELL

Stroke in the Eye
Palm Springs, CA

Mr. Capell lost his vision in 2001. Since then he has taken advantage of the opportunities given to him by experimenting with different art mediums. He enjoys working with abstract expression and free form to create his art pieces.

We Three

\$300



BILL CARLSON

Ocular Histoplasmosis
Brea, CA

Mr. Carlson started losing his vision at the age of 32. He had stopped using oils for quite some time and resumed the use of oils three years ago. Since his vision loss, he has been painting from what his mind sees.

Hawaiian Sunset

\$190



DORIS CARLTON

Macular Degeneration
Orange, CA

Ms. Carlton believes her macular degeneration has transformed her art. With her watercolor artwork being less defined, it gives the piece a freer feeling. She believes that flowers have a lot to say and her artwork helps translate their voices onto paper for all to hear.

Hibiscus

Apple Blossoms

\$150

\$150



STELLA DE GENOVA

Retinitis Pigmentosa
Chicago, IL

Ms. De Genova's visual impairment started when she was only 4 years old. As her vision loss goes through different stages, her artwork also evolves through the different mediums. She currently enjoys working with chalk pastels and watercolors. Her artwork goal is to elicit a feeling from the viewer and to provide visual pleasure.

Be a Tree

\$225



NORA DEVANE

Retinitis Pigmentosa
Streeter, ND

Ms. Devane has been affected by retinitis pigmentosa for 12 years. Her visual impairment does not hinder her ability to capture the beauty of nature. She finds beauty by focusing completely on nature and blocking out any noise that may be disturbing it.

Rays of Hope

\$600

Dragonfly on a Wire

\$450

Kaleidoscope *(at NVISION Laser Eye Centers)*

\$450



SANDRA GALLEGOS

Advanced Rod Dystrophy
Fullerton, CA

Ms. Gallegos has been legally blind since birth. She believes her vision loss has only limited her hands, not her brain. Her artwork does not come from what she sees but from what she feels and what she dreams of.

Wisdom

\$35

Dog

\$130



ANDREA GARCIA

Aniridia
Norwalk, CA

Ms. Garcia was born with aniridia. Her visual condition makes it hard for her to capture the exact image she has envisioned, but that doesn't stop her from trying until she gets the desired results. She uses the camera to capture everyday objects under a different light. Her artwork focuses on showcasing the beauty behind ordinary objects.

Dreamy Window

\$1,000



SARKIS GEKCHYAN

Optic Nerve Hypoplasia
Costa Mesa, CA

Sarkis was diagnosed with optic nerve hypoplasia when he was an infant. This visual impairment has made him reliant on magnifiers to see the details of objects and to create the details in his artwork. He mostly uses pencil for his artwork because it allows for shading and possible alterations to his pieces.

Ne-Yo

\$90

Self Portrait in Time
Meerkat

\$100
\$50



LIORA GOLDMAN

Visual Impairment resulting
from Head Trauma
Afula, Israel

Ms. Goldman suffered from a head trauma 9 years ago from a terrorist attack that has resulted in visual impairments. Before her injury she enjoyed drawing but now her art-work has shifted into photography. She wants to elicit pleasure and positive emotions from the viewers with her photos. She wants to show society that physical restrictions can bring about new opportunities.

Oriental Sunset

\$100



DANIEL GONZALEZ

Aniridia and Glaucoma
Orange, CA

Mr. Gonzalez was born with this visual impairment but he said that this does not affect his creativity or his artwork. Instead, it only pro- longs the preparation time for his pieces. He chose to use mosaic tiles in his artwork because each piece is not straight but it can still do the job of coming together to create an image.

Hammy the Pig

\$120

The Elusive Frog Prince

\$99.99



ESTHER GONZALEZ

Aniridia, Glaucoma, and Cataracts
Orange, CA

Ms. Gonzalez has had vision problems ever since birth. Although that makes it more challenging for her to create art, it doesn't stop her from expressing herself through mosaic art. She chose to work with mosaics because it is like a jigsaw puzzle and she has always enjoyed putting puzzle pieces together.

It's a Spare

NFS



CHARLIE GROVER

Macular Degeneration
San Pedro, CA

Mr. Grover was diagnosed with macular degeneration 15 years ago. Not being able to drive, he now walks everywhere and that gives him a more intimate contact with his environment. He believes that this has allowed him to appreciate nature and its illusions and mysteries. He relies on magnifiers to set and focus his camera and concentrates heavily on framing the image.

Aging in Michigan

\$275

Moon and Stars

\$275

Facets *(at NVISION Laser Eye Centers)*

\$275



SUSAN JOY GUSTAFSON

Retinitis Pigmentosa
Vancouver, WA

Ms. Gustafson was diagnosed with this condition at age 35. She believes that this impairment is a blessing in disguise; it has allowed her to look at nature more closely. She knows her artwork is complete once she has successfully expressed her joy in it. She is inspired by the beauty of nature. Her recent themes are tropical and floral.

Bird of Paradise

\$200

Al's Tulips

\$100



ROSA GUTIERREZ

Cataracts
Downey, CA

Ms. Gutierrez started losing her vision when she was 36. She is inspired by nature and loves working with mosaics, ceramics, and basketry. She likes working with her hands to produce artwork that portrays the beauty of nature.

Mariposa

\$50



ROCHELLE HAAGEN

Retinitis Pigmentosa
Lomita, CA

Ms. Rochelle was born with retinitis pigmentosa. She gets a sense of freedom when she works on her art pieces. Her artwork reflects the beauty of nature and its freedom. She enjoys working with mosaic tiles because "the art comes to life under her fingers."

Whales Song

NFS



WAYNE HEIDLE

Retinitis Pigmentosa
La Habra, CA

Mr. Heidle was diagnosed with retinitis pigmentosa when he was 21 years old. After attending the Shared Visions Art Exhibits over the last six years, he was inspired to create his own artwork. He chose to use tiles but his visual impairment made lining the tiles up difficult and challenging. Wayne (and his guide dog, Tuesday) are very valued volunteers for the ECC, coordinating the McCarty Low Vision Technology Rehabilitation Center.

A Bird's Paradise

NFS



ISAIAH HINNERICHS

Ocular Cutaneous Albinism
Pasadena, CA

Mr. Hinnerichs' condition makes his eyes extremely light sensitive, but it lets him see contrast easily. In his artwork he wants to show the world what he sees through his eyes. He is constantly finding ways to improve himself and his artwork. He believes that "a good artist knows a little bit about everything in the world and a great artist knows a lot of everything in the universe."

Pasadena City Hall

iPhone Art 3

\$200

\$300



EVA HORNE

Blind
Oxelosund, Sweden

Ms. Horne started having vision loss at age 71. Her vision loss has not affected her artwork. She does rely on magnifiers to help her with details. She's been fascinated by icons ever since she was a child and now she enjoys painting them.

**St. Nicholas,
The Seafarer's Saint**

\$300



EVANGELINE JIMENEZ

Macular Degeneration
Burbank, CA

Ms. Jimenez does not allow her macular degeneration to affect her artwork. Instead, she views it as a reason to expand her art. She finds different ways of expressing what she can and cannot see. And if she only sees part of an object, she uses her imagination to complete the image.

Khandor's Khanquest

NFS



TONI JOHNSON

Glaucoma and Night Blindness
Gresham, OR

Ms. Johnson has had vision problems ever since she was born. Due to her vision challenges, she prefers to work with photo references that are small and have sharp colors. She enjoys working with watercolors and the unexpected results with each brushstroke. Her favorite things to paint are flowers, animals, and nature.

Market Day

\$200

Harvest (at *NVISION Laser Eye Centers*)

\$300

Dawn's Opening

\$400



XANDER JOHNSON

Albinism, Low Vision, Nystagmus,
and Light Sensitivity
Corona, CA

Eight year old Xander was born with albinism. This condition has made it difficult for him to see fine details. It can also cause involuntary eye twitches and light sensitivity. However, even with these symptoms, Xander is able to overcome them and create artwork for his class assignment.

Flower by Georgia O'Keefe NFS



ARNOLD KARLSON

Macular Degeneration
Redondo Beach, CA

Mr. Karlson's condition has made it difficult for him to see details so he uses whatever sight he does have to create his artwork. He chose to use mosaics because it gives him satisfaction when the mosaics fit perfectly in his art pieces.

Dolphins

\$200



STANLEY KATAPKA

Macular Degeneration
Whittier, CA

Mr. Katapka was diagnosed with macular degeneration 10 years ago. When he was diagnosed with this visual impairment, he thought he would not be able to create artwork any longer. But luckily, he came across an art class from the Braille Institute that has allowed him to continue his artwork. He is inspired by nature and portrays his admiration of nature through watercolors.

Into the Woods

Mountain High Mine

NFS

NFS



KATHY KENNEDY

Optic Nerve Damage from
Brain Tumor
La Habra, CA

Ms. Kennedy started having vision problems at the age of 6. The inability to see many things has affected her creativity to some degree, but it has not stopped her from creating art. She expresses her creativity through the medium of mosaics. Working with tiles has allowed her to bring her patterns and designs to life.

Home Tweet Home

NFS



JEFFREY KNEUT

Optic Neuritis and Multiple Sclerosis
Brighton, NY

Mr. Kneut has been having vision problems for 30 years. His visual impairment influenced him to use brighter and bolder colors; it has also made him paint more from his emotions rather than from what he sees. "Watercolors are his vision to the illusions in his mind." It helps him create art from what his mind sees.

On the Cove

Memories of Home

\$1700

\$1200



JOE LANDAU

Stroke of Occipital Lobe
Long Beach, CA

Mr. Landau had a stroke 3 years ago which led to his vision loss. His visual impairment has influenced him to start creating art. He enjoys working with mosaics because he thinks "it's cool" when the pieces come together to form an image.

Hawaiian Holiday

\$275



VIRGINIA LANTRY

Macular Degeneration
San Diego, CA

Ms. Lantry's visual impairment has left her world blurry and gray, but she did not let that hinder her creativity. With the use of a lighted magnifying glass and close circuit TV, Ms. Lantry is able to create art by drawing and painting. She enjoys painting nature, particularly rainbow colored skies and bodies of water.

When Wash Day is Done **NFS**



JOHN LEWIS

Retinitis Pigmentosa
Harrisburg, PA

Mr. Lewis was born with retinitis pigmentosa. His visual restriction challenges him to concentrate longer and more intense so that he can capture the fine details of the world. He is very passionate about the wildlife and the outdoors in his artwork and tries to convey his love for nature to the viewer.

Old West Coyote **\$375**
Lost at Sea \$300



ANTHONY MARTINEZ

Retinopathy of Prematurity
Norwalk, CA

Mr. Martinez has been visually impaired since birth. Since he could not see what he was doing, he wanted to feel what he was creating with a 2D effect. He started working with tiles, which allowed him to know exactly what image he was creating in his art piece.

Rise and Shine

NFS



SHARON MATSON

Retinopathy of Prematurity
Costa Mesa, CA

Ms. Matson experienced visual impairments since birth. Although she is unable to see, she can still visualize the art that she wants to create. She enjoys using mosaics and likes to incorporate Braille in her artwork since Braille is such an important part of her everyday life.

Moon Glow

NFS



OKJA NANCY MIN

Retinitis Pigmentosa
La Mirada, CA

Ms. Min was first diagnosed with retinitis pigmentosa 30 years ago. She has a great appreciation for the beauty behind every landscape and flower. Her love for nature and the environment that surrounds her continues to grow as her vision worsens. She chose to work with mosaics because they come in all shapes, colors, and textures.

Angel of Hope
Sunburst

NFS
NFS

AMY MONTHEI

Congenital Cataracts and Glaucoma
Minneapolis, MN

Ms. Monthei was legally blind at birth and from that it gave her a different perspective of the world. Her goal in her artwork is to help others understand the importance of art and the role it plays in the lives of everyone. She is currently inspired to work with tactile paintings and works hard to incorporate Braille words into her art pieces. Her textural artwork allows viewers to look at art with a new and different point of view.

River

\$425

Spring Rain *(at NVISION Laser Eye Centers)* \$600
Bronze Constellation \$350





MARI NEWMAN

Brain Damage at birth
Minneapolis, MN

Ms. Newman was experiencing vision loss at birth; however, she accommodates her visual impairment with the usage of magnifiers and jeweler's loop for fine details. She also paints in a larger scale to accommodate her vision loss. Her artwork usually portrays a happy world without the harsh realities or happy icons and characters that are well-known to us.

Flower Children at the Lake **\$700**

Pickled Artist Painting Blue Banana Peel \$500



JESSICA OVERTURF

Hyperopia due to Multiple Sclerosis
Basin, MT

Ms. Overturf started having vision problems a little over 10 years ago. Her artwork expresses the different aspects of her life. The joy she gets from painting is the reason why she continues to create artwork. She enjoys painting fishes, flowers, and hands.

Sun Spots

\$175



BARBARA ROMAIN

Retinitis Pigmentosa
Los Angeles, CA

Ms. Romain was diagnosed with retinitis pigmentosa at the age of 35. As her vision started to get worse, her artwork grew more vivid in color. Her artwork represents what she hears, remembers, and imagines, instead of what she sees. She gets inspiration from music and language and incorporates that into her artwork.

Kozmik Beatnik #1

\$1500

Red Letter Day 6-21

\$250



ANTHONY CAMRON SANAEE

Retinitis Pigmentosa
Laguna Hills, CA

Nineteen year-old Anthony started losing his vision when he was four years-old. His visual impairment has made it hard for him to focus on details so he relies on a computer to enlarge the details. He enjoys using charcoal and paint because it creates smooth images.

Blue

Mirror
Heart

NFS

NFS
NFS



ALBERT SCHMIEGE

Stargardt's Macular Dystrophy
Maustow, WI

Mr. Schmiede was diagnosed with Stargardt's disease at the age of 24. He taught himself techniques that allowed him to create illusions of depth and details. With every brushstroke, he ensures that his creativity shows through in his artwork. Through his work, he wants to create a mood that can be enjoyed by himself and viewers.

Board Walk

\$275



MATHEW SCHRIEBER

Retinitis Pigmentosa
Granada Hills, CA

Mr. Schrieber encountered his visual impairment at birth. His field of view is quite small, so he employs the help of a camera to show him the details of an image. Photography has made him aware of shadow and light which he later used to create edges, define boundaries, and form shapes. He tries to capture the beauty of nature in his pictures.

Robot's Repose

\$150

Long View (at *NVISION Laser Eye Centers*)

\$150



ANNE SHIFFLETT

Tractional Retinal Detachment
and Glaucoma
San Antonio, TX

Ms. Shifflett started losing her vision at a young age. She began painting seven years ago and believes that "art gave her a purpose in life." She has only used acrylics and enjoys painting landscapes, animals, still life, and portraits. Due to her limited vision, she relies on her digital camera to act as her eyes.

The Jaguar

\$650



ANTONIO SMART

Optic Nerve Atrophy
Long Beach, CA

Mr. Smart's visual impairment has made him more creative because he draws inspiration from music and anything he visualizes. He believes that art allows him to view the world under a different light. He tries to portray nature and people under different facades.

Sanctuary

\$75



SAM SMITH

Optic Nerve Atrophy
Santa Monica, CA

Mr. Smith was born with optic nerve atrophy. He uses his artwork to compensate for his inability to see and as a result it shows the world what he can see. In his artwork, he includes humor and hidden meanings from everyday language and symbols.

Don't Take a Fence

Speaking Up

\$350

\$300



BRONWEN TAGOE

Bilateral Anophthalmia
Harrisburg, PA

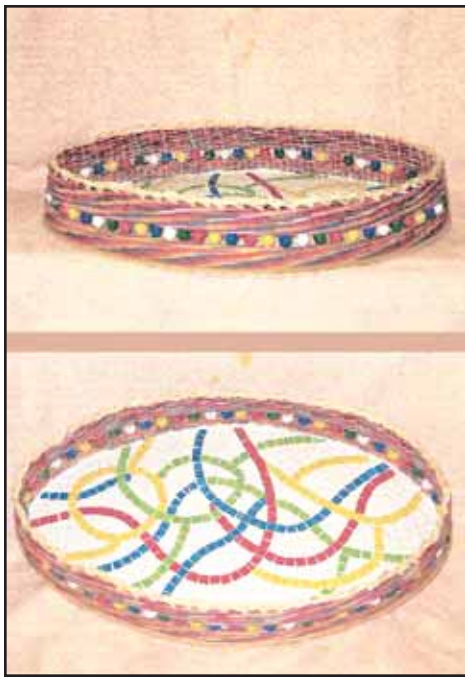
Eighteen year-old Bronwen was diagnosed with bilateral anophthalmia at birth and is totally blind. Due to her condition, she sees the world through her hands. She creates textured paintings with the use of sand, salt, beads, and flowers.

No Storm in the Afternoon

Spring Forward

\$100

\$170



BARBARA TALBERT

Optic Neuropathy and Grave's Disease
Long Beach, CA

Ms. Talbert started losing her vision 12 years ago. Her visual impairment has made her focus more within her field of expertise when it comes to art medium. She chose to use mosaics because the bright and dark tiles give her a better contrast when creating art.

Carnival in Basketry and Mosaic

Up Up and Away

\$100

\$500



MICHAEL TICKENOFF

Scarred Retina and
Damaged Optic Nerve
Silverton, OR

Mr. Tickenoff was affected with vision loss at the age of 5. He does not let his vision loss impede on his creativity. Instead, he uses it as a force to drive his creativity. His favorite themes are landscapes because the images are big enough for his limited vision. He enjoys the outdoors and tries to show the freedom of wilderness in his artwork.

Hello Technology

Summer Time Flowers

\$250

\$100



MARIA VARGAS

Microphthalmia, Extreme Hyperopia, and Amblyopia
Wilmington, CA

Ms. Vargas was born with her visual impairments. She relies on the use of magnifiers and enhanced lighting to help her see better. She chooses to use mosaics because of its beauty and the tranquility it brings to her when she works with them.

Pop's Little Piece of Paradise

Perfect Vintage

\$2000

\$1500



ARLISSA VAUGHN

Retinitis Pigmentosa
Seal Beach, CA

Ms. Vaughn was diagnosed with retinitis pigmentosa six years ago. Having this visual impairment has made her realize how fragile humanity can be, but it has also fueled an optimistic and hopeful side of her. She tries to portray this in her artwork; the complex journey and interactions that occurs in humanity, individuals, and nature. She uses a variety of different mediums and often times ends up creating an art piece with mixed mediums.

Summertime Self-Portrait

Bike *(on cover)*

Passion Collision *(at NVISION Laser Eye Centers)*

\$325

\$325

\$175



LOURDES WAGNER

Diabetic Retinopathy
Buena Park, CA

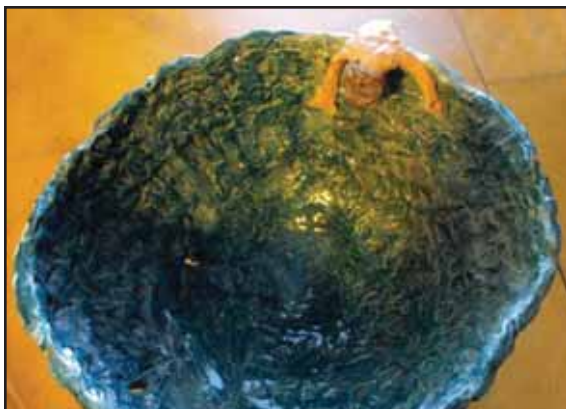
Ms. Wagner started losing her vision at age 23. Diabetic retinopathy has made it difficult for her to do detailed work and distinguish colors. She enjoys drawing and employs the use of a C.C.T.V. to aid her with her creations. She enjoys using hands-on media, such as mosaics and clay, to create her artwork.

Midnight Stroll

Spy Hop

NFS

NFS



DONNA WALLACE

Melanoma Growth on Optic Chiasm
Costa Mesa, CA

Ms. Wallace has been affected with vision loss for about 35 years. She sees the world with her fingers and believes that her "artwork gives her the sight that her eyes want to see." She chooses to use clay because it allows her to utilize her fingers and create masterpieces.

Jumping Into Trouble

\$50



KURT WESTON

Cytomegalovirus Retinitis
Huntington Beach, CA

Mr. Weston was diagnosed with cytomegalovirus retinitis at the age of 33. Although his vision is limited, he gets by with the help of his guide dog, Ambrose and some high powered magnification devices. He is inspired by nature and shows the beauty in his artwork by bringing out the magnificent colors that are hidden in nature that are not visible to the human eye. He believes that nature and art plays a huge role in the healing process.

Threshold of a Dream	\$400
Far Away Island	\$400
Swaying Palms Sunset	\$400



HELEN WIESE

Glaucoma
Laguna Hills, CA

Ms. Wiese was diagnosed with glaucoma 25 years ago. She believes that her visual impairment has altered the way she creates her artwork but it has not affected her creativity at all. She has worked with all mediums but loves using watercolors for its freshness and spontaneity. Her favorite themes recently have been flowers and gardening.

Winterscape	\$250
Orange Glory	\$125
Dos Camellias <i>(at NVISION Laser Eye Centers)</i>	\$250



CHERRY WINCHESTER

Proliferative Diabetic Retinopathy
Oakland, CA

Ms. Winchester started having vision problems 13 years ago. She uses magnification tools to help her with her artwork. In the past, she has used charcoal and clay, but recently she has been experimenting with mixing acrylics. She enjoys creating abstract pieces.

Choices

NFS



JEROME WRIGHT, JR.

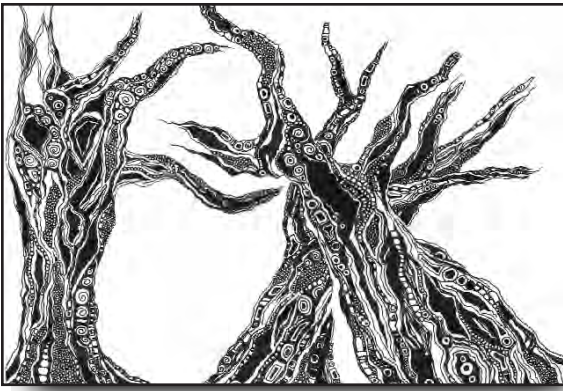
Glaucoma
Union City, CA

Mr. Wright was diagnosed with glaucoma when he was twelve years old. His visual impairment has attracted him to large shapes, bright colors, and movements, instead of details. He has always been a big fan of photography but decided to take a break when his vision loss was affecting his photographic results. However, with the help of some digital technology, Mr. Wright is able to resume his photography hobby and create pictures that will allow others to see what he sees in his world.

Dusk at Pigeon Point, CA **\$300**

Autumn in South Lake Tahoe \$300

(at NVISION Laser Eye Centers)



NICHOLAS ZAFFARESE

End-Stage Glaucoma
Yorba Linda, CA

Mr. Zaffarese was affected with vision loss 11 years ago. He refuses to let his visual impairment affect his artwork. He believes that "where there is a will, there is a way" especially when it comes to art. He wants to challenge people's opinions on his artwork and learn from their opinions.

Trees of Mystery

\$80

Inner Space *(at NVISION Laser Eye Centers)*

\$75

Rorschach-1

NFS

What is {Albinism?} Albinism is a rare, non-contagious, genetically inherited condition occurring in both genders regardless of ethnicity, in all countries of the world. BOTH the father and mother must carry the gene for it to be passed on even if they do not have albinism themselves.

The condition results in a lack of pigmentation in the hair, skin and eyes, causing vulnerability to sun exposure and bright light. Almost all people with albinism are visually impaired, with the majority being classified as "legally blind." While numbers vary, in North America and Europe it is estimated that 1 in every 20,000 people have some form of albinism. In Tanzania, and throughout East Africa, albinism is much more prevalent, with estimates of 1 in 2,000 people being affected.

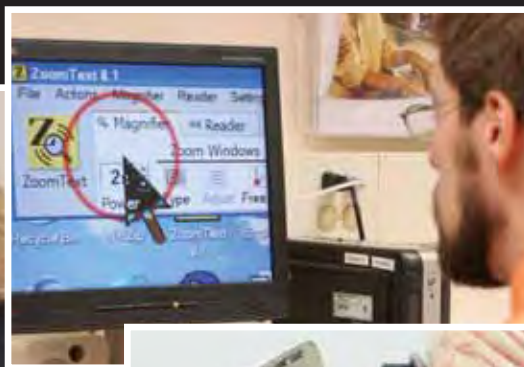
The term "person with albinism" (PWA) is preferred to the term "albino" as it puts the person before the condition.

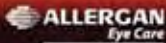
MARY ANN KEVERLINE WALLS LOW VISION REHABILITATION CENTER

Vision is a complete sense, encompassing the ability to perceive detail (acuity), color and contrast, and to distinguish objects. These capacities can diminish gradually with age. While most visual changes can be corrected by glasses, medicine or surgery, visual changes caused by eye disease, poor health or injury can cause permanent vision loss. If the loss is total, the result is blindness. If the result is partial, the vision impairment is known as "low vision." A person with low vision has severely reduced visual acuity or a significantly obstructed field of vision, or both.

The Center provides services including: functional vision examinations; instruction to help patients adjust to optical devices such as high power glasses and magnifiers; recommendations for adaptive devices that reduce glare; special lighting, large print materials and adaptive computer technology; prescription of low vision optical devices; follow-up care as needed, including low vision instruction and training; training in independent living skills, and, referral and collaboration with other vision rehabilitative services and support groups.

Mary Ann Keverline Walls Low Vision Center... 714.992.7890





Allergan and Your Practice... Proud to Be a Part of Your World

When you thrive, we thrive. That's how opportunity brings us together.

Register for Updates and Our e-Newsletter
Enter your information below to sign up!

First Name: _____
Last Name: _____
E-mail: _____

Yes, I would like to receive future communications from Allergan.

SUBMIT

Calendar of Commitment

Las Vegas, NV	September 21-24, 2011	
Great Western Council Optometry	Portland, OR	October 6-9, 2011
American Academy of Ophthalmology		



Visit allerganoptometry.com today

One Website. A World of Resources.

Proud to Be a Part of Your World

Allergan offers the optometry community quality products, educational programs, and practice support. Our goal is to be your partner in patient care. When you thrive, we thrive; that's how opportunity brings us all together.

Visit our optometry-dedicated website for more information.

Get the free mobile app at <http://gettag.mobi>

- **RESTASIS**® (Cyclosporine Ophthalmic Emulsion) 0.05% • **LASTACAPT**™ (alcaftadine ophthalmic solution) 0.25%
- **ALPHAGAN**® P (brimonidine tartrate ophthalmic solution) 0.1% • **COMBIGAN**® (brimonidine tartrate/timolol maleate ophthalmic solution) 0.2%/0.5%
- **LUMIGAN**® (bimatoprost ophthalmic solution) 0.01% • **ACUVAIL**® (ketorolac tromethamine ophthalmic solution) 0.45%
- **REFRESH**® OPTIVE™ Lubricant Eye Drops • **ZYMAXID**® (gatifloxacin ophthalmic solution) 0.5% • **LATISSE**® (bimatoprost ophthalmic solution) 0.03%



Developing advanced,
life-improving vision technologies
for people of all ages



AMO is a proud founding sponsor of the Shared Visions exhibit
and congratulates this year's artists on their inspiring work.

www.abbottmedicaloptics.com

 **Abbott**
Medical Optics



Seeing the world better

Seeing the world better with Essilor

Essilor is a world leader in the ophthalmic industry. Our advanced technology provides superior vision solutions for people of all ages. Because 70% of what we know about the world around us comes through our eyes, we're committed to promoting healthy vision and educating people about the best vision choices and their benefits. *Varilux*® progressive lenses, *Crizal*® No-Glare lenses and *Xperio*® polarized sunglass lenses are Essilor Brands.



EssilorUSA.com

1-DAY ACUVUE® MOIST® Brand Contact Lenses
with LACREON® Technology

ENGINEERED FOR ALL DAY COMFORT



ACUVUE® Brand Contact Lenses are indicated for vision correction. As with any contact lens, eye problems, including corneal ulcers, can develop. Some wearers may experience mild irritation, itching or discomfort. Lenses should not be prescribed if patients have any eye infection, or experience eye discomfort, excessive tearing, vision changes, redness or other eye problems. Consult the package insert for complete information.

Complete information is also available from VISTAKON® Division of Johnson & Johnson Vision Care, Inc., by calling 1-800-843-2020 or by visiting jnjvisioncare.com. ACUVUE®, 1-DAY ACUVUE® MOIST®, LACREON®, INNOVATION FOR HEALTHY VISION™, and VISTAKON® are trademarks of Johnson & Johnson Vision Care, Inc. *All third-party products are trademarks of their respective companies. © Johnson & Johnson Vision Care, Inc. 2011.



**UNDER THE
SAME SUN**

On behalf of persons with albinism in Tanzania,
Under the Same Sun is proud to
be a part of the Shared Vision Art Exhibit
at the Southern California College of Optometry.

**To support the life changing
work of Under The Same Sun
please contact:**

**info@underthesamesun.com
or phone 604-587-6502**

WWW.UNDERTHESAMESUN.COM

www.facebook.com/underthesamesun



The Knott Family
Congratulates

Shared
VISIONS
Art Exhibit
Artists

You are inspirational!

SAVE THE DATE



Southern California
College of Optometry

SHARED VISIONS

Gala Auction

-And-
V-Awards

Thursday, Sept 20, 2012

- Nixon Presidential Library -



GLOSSARY

Albinism: Individuals with albinism often suffer with impaired vision caused by nystagmus, strabismus, myopia, photophobia, and optic nerve hypoplasia. Some of these problems arise from the fact that the lack of melanin leads to a poorly developed retina. This in turn affects the fovea, which is the central area used to see, resulting in lower acuity, and thus poor vision.

Amblyopia: Amblyopia, also known as "lazy eye," has many causes. Most often it results from either a misalignment of a child's eyes, such as crossed eyes, or a difference in image quality between the two eyes (one eye focusing better than the other).

Aniridia (Micro-Ophthalmus, Bilateral Anophthalmus): This is a rare congenital condition that results in the underdevelopment of the eye's iris. It will usually be present in both eyes. It is also associated with vision loss due to poor development of the retina.

Cararacts: A cataract is a clouding or yellowing of the lens in the eye. This lens is usually clear and able to change shape; thus allowing a person to focus from near to far and vice versa. Cataracts have a variety of causes and the most common treatment is surgical removal.

Choroid Dystrophies (PIC, Choroideremia): This disease, occurring almost exclusively in males, is a rare, genetically induced eye disease that causes degeneration of the pigment in the back of the eye. In childhood, night blindness is the most common first symptom. As the disease progresses, there is loss of peripheral vision or "tunnel vision", and later a loss of central vision.

Cystoid Macular Edema: Cystoid macular edema is a painless disorder which affects the central retina or macula. When this condition is present, multiple cyst-like (cystoid) areas of fluid appear in the macula and cause retinal swelling of the edema. The main symptom is blurred or decreased central vision.

Cytomegalovirus Retinitis (a.k.a. CMV): Cytomegalovirus is found in almost everyone, however, those individuals who have a suppressed immune system by diseases, transplants, or chemotherapy are unable to destroy this virus. It is then able to do damage to the body and eyes and may lead to blindness.

Diabetic Retinopathy (Diabetic Macular Edema): Diabetes can lead to an ocular condition known as diabetic retinopathy. This is the growth of new weak blood vessels in the retina. Since these vessels are weak, they can tear and cause bleeding and permanent vision loss. Diabetes can also cause macular edema (swelling of the macula). These conditions can lead to vision loss, retinal detachment and even blindness.

Glaucoma: This is a disease of the optic nerve. If glaucoma goes untreated, there will be permanent optic nerve damage resulting in visual field loss, and eventually even blindness.

Legal Blindness: The term "legal blindness includes vision that is 20/200 (the big "E" on the eye chart) or worse. Unless someone is totally blind, he/she may have some useable vision (low vision) that may be maximized with low vision devices.

Macular Degeneration (ARMD, Stargardts Disease): This is a condition typically found, but not limited to the elderly. The macula which is located on the retina, is responsible for central vision. In this condition, the macula, can thin, deteriorate, and in some cases, bleed. Because it is located in relation to central vision; reading, seeing fine details, and even making out faces, are all tasks that are effected. It can be genetic and cause severe vision loss in young and middle-aged adults. The most common form is in the elderly as age-related macular degeneration.

Nystagmus: Nystagmus is an involuntary rhythmic shaking or wobbling of the eyes. Nystagmus has also been described as "dancing eyes" or "jerking eyes".

Ocular Histoplasmosis Syndrome (OHS)

Histoplasmosis is a disease caused when airborne spores of the fungus *Histoplasma capsulatum* are inhaled into the lungs, the spores spread from the lungs to the eye, lodging in the choroid, a layer of blood vessels that provides blood and nutrients to the retina. OHS develops when fragile, abnormal blood vessels grow underneath the retina. These abnormal blood vessels form a lesion known as choroidal neovascularization (CNV). If left untreated, the CNV lesion can turn into scar tissue and replace the normal retinal tissue in the macula.

Optic Nerve Atrophy: This is a loss of some or most of the fibers of the optic nerve. This is part of the brain and has no ability for regeneration. That means that vision loss will be permanent. This condition can be hereditary and usually appears around 20-30 years of age.

Optic Nerve Hypoplasia: An under development of the optic nerve head causing a variety of vision problems and ultimately low vision.

Optic Neuritis (Multiple Sclerosis): Optic Neuritis occurs when there is inflammation of the optic nerve, usually caused by swelling. This swelling can damage the myelin sheath surrounding the bundle of axons. This swelling and damage can affect color vision and lead to vision loss.

Optic Neuropathy: Optic Neuropathy is a disease caused by methyl alcohol consumption leading to a toxic optic neuropathy, with rapid deterioration in vision and irreversible blindness, if not treated within 24-28 hours. Major symptoms are sudden or gradual loss of vision (partial or complete). There may or may not be pain on movement of the affected eye and may suffer from color loss.

Retinal Detachment: This is a condition in which the retina peels away from the supportive tissue underneath. It may be localized, or start as a small tear, but without very quick treatment, it can lead to the entire retina detaching. Retinal detachments can lead to vision loss, and even blindness.

Retinitis Pigmentosa (Usher syndrome): This is a genetic disease that presents itself with abnormalities in the retina. This condition typically starts with night blindness and then gradually the peripheral visual field closes in and creates a tunnel vision effect. Late in the course of the disease, the central vision will also diminish and may lead to total blindness.

Retinopathy of Prematurity: (previously called retrolental fibrosis – RLF)
This is a disease in premature babies. In premature babies, the retina is not fully developed. Since these infants are born early, some of the vascularization of the retina which normally takes place in-utero, actually occurs after birth. This appears to cause a problem as the vessels grow in an unorganized manner. This can result in scarring and retinal detachment; which can lead to vision loss and blindness.

Rod Dystrophy: This is a condition in which there is a problem with or a loss of the rod photoreceptors in the eye. Rods are the photoreceptors in your eyes that are located peripherally and are responsible for movement, peripheral vision, and dark or night time vision. This is a progressive condition, and often results in blindness.

SHARED VISIONS ART EXHIBIT SPECIAL THANKS

The Shared Visions program requires many organizational hours and a tremendous amount of commitment. Our very special thanks are extended to the “behind the scenes” staff and volunteers!

SHARED VISIONS TEAM

Judy Badsteubner, Higher Media

Matt Breneman, Multi-Media

Ernie Carrillo, Director of Multi-Media

Kate Garcia, Administrative Assistant of Clinical Education

Kathy Fruge-Browder, Director of ECC Operations

Wayne Heidle, Technology Center Coordinator

Dr. Rebecca Kammer, Chief, Low Vision Rehabilitation Center/ ECC

Co-Founder of Shared Visions Art Exhibit Program

Arlene Kaye, Director of Marketing, SCCO and Curator of Shared Visions Art Exhibit

Janice Lee, Administrative Assistant

Debra Marks, Director of Communications

Dr. Julie Schornack, Vice President & Dean, Clinical Affairs

Paul Stover, Vice President, Advancement & Marketing

Kaitlyn Tice, Special Events Coordinator, Administrative Assistant

June Tse, SCCO Work Study, Class of 2014

Randyce Wechter, President, Adaptive Voice, LLC

SHARED VISIONS ART EXHIBIT 2011-12 JUDGES

James Dahl, CSUF Art Professor

Kay Devine, CSUF Art Professor

Martin Kupel, Art Installation Specialist

Pamela Moore, Arts & Crafts Coordinator, Braille Institute, Orange County

Ann Phong, Art Professor, Cal Poly Pomona

SHARED VISIONS ART EXHIBIT EXTERNAL RESOURCES

Rick Guidotti, Positive Exposure

Barbara Kimler, Public Relations

Matin A. Kupel, Art Installation Specialist, Long Beach, CA

Cathy Leonard, President, CTL Marketing, Dallas, TX

SHARED VISIONS ART EXHIBIT FOUNDING SPONSOR





Eye Care Center

SOUTHERN CALIFORNIA
COLLEGE OF OPTOMETRY

www.sccoeyecare.com

PATIENT CARE SERVICES

Mary Ann Keverline Walls Low Vision Center	714.992.7890
Jarnagin Primary Eye Care Center	714.449.7401
Center for Vision Research	714.449.7490
Childs Family Laser Center	714.449.7415
Chronic Care, Special Testing and Ophthalmology Consultation Service/ Electrodiagnostics	714.449.7415
Optical Service	714.449.7410
Pediatric Vision Care	714.992.7870
Stein Family Cornea and Contact Lens Center Pediatric Contact Lenses/ Ocular Prosthetics	714.449.7420
Studt Center for Vision Therapy	714.449.7430
Reception Center	714.449.7401
Urgent Care/ After Hours Care	714.870.0258

HOURS

Monday, Tuesday	9am–6pm
Wednesday	11am–8pm
Thursday	10am–7pm
Friday, Saturday	8am–5pm

2575 Yorba Linda Boulevard
Fullerton, CA 92831

Follow Us:
 Share your Thoughts
 Post a Comment
 Download Our App

