

# The Eye Care Center at SCCO's Doctor-to-Doctor Referral Program

Our mission is excellence in patient care, clinical education and research.

Yet another innovation that will take patient care to another level

## THE EYE CARE CENTER AT THE SOUTHERN CALIFORNIA COLLEGE OF OPTOMETRY PROVIDES THE FOLLOWING SERVICES:

- **Stein Family Cornea & Contact Lens Center**  
714.449.7420
- **Dry Eye Institute**  
714.449.7420
- **Mary Ann Keverline Walls Low Vision Center**  
714.992.7890
- **Ocular Disease /Ophthalmology Consultation & Childs Family Laser Center**  
714.449.7415
- **Ocular Prosthetics**  
714.449.7420
- **Pediatric Vision Care**  
714.992.7870
- **Pediatric Contact Lens**  
714.449.7420
- **Studt Center for Vision Therapy**  
714.449.7430



Julie A. Schornack

### Greetings from the Eye Care Center, SCCO

We all know that excellence in patient care is the bottom line. Here at the Eye Care Center our faculty and staff are here to provide you with the most up to date management guidelines and procedures that will enable YOUR patient to have the very best care possible. Our Doctor-to-Doctor Referral program is designed specifically to serve your patients and we will make every effort to communicate the care provided. You will have our assurance that your patient returns for continuing care. The following information hopefully will provide you more insight on the services that we can provide and thank you for allowing us the opportunity to care for your patients. On behalf of the faculty and staff of the Eye Care Center at SCCO, best wishes for a prosperous 2011.

Sincerely,  
Julie A. Schornack, O.D., M.Ed.  
Vice President and Dean of Clinical Affairs

### We all share the same vision...

To provide patients with the best care possible. As we all know, occasionally a patient will come along with a unique issue that you may need special assistance with. The ECC is home to world-class leaders in the eye care profession with expertise in many specialty eye care areas. With the Doctor-to-Doctor Referral Program, you have the opportunity to request the specialist of your choice, complementing your high level of patient care. We then make every effort to ensure that your patient returns to you for continuing care and to fill any glasses or contact lens prescription.

### Referring to the ECC is as simple as 1-2-3.

We make your patient referral easy and painless.

1. Simply, fill out the Specialty Services Consultation/ Referral Form. (Please make copies of the enclosed Referral Form.) Or, go to our website [www.sccoeyecare.com](http://www.sccoeyecare.com) - Referral Fax Form and print out the form.
2. Attach copies of your patients' primary care records.
3. Fax all of this information to 714.992.7846.

#### Here's what the ECC will do:

1. The ECC will send you a postcard letting you know that your patient has made an appointment.
2. Once the patient has been seen by one of our OD's, you will receive a copy of our summary letter.
3. If there are issues that need to be resolved prior to determining treatment, the Doctor will call you to discuss the case.

Listed below are some of the specific areas that we can help you with:

#### In the Cornea & Contact Lens Center:

- Bifocal contact lenses
- Corneal reshaping
- Dry eye management
- Keratoconus
- Pediatric contact lens service
- Contact lenses for post-surgical and irregular corneas
- Prosthetic contact lenses/artificial eyes

#### In the Low Vision Center:

- Low Vision evaluation
- Low Vision referrals (Mobility specialists), support groups, counseling, driving programs, Braille Institute, etc.
- Optical and video device prescribing
- Computer consultation with adaptive software
- Visual field enhancement strategies

#### In the Ocular Disease/Ophthalmology Consultation & Laser Center:

- Laser Center (Argon, Yag, PDT, SLT Lasers)
- Angiography Service
- Electrodiagnostics
- Glaucoma and Retinal Special Testing

#### In the Pediatric Vision Care/ Pediatric Contact Lens Center:

- Vision exams before Age 1
- Vision exams in preschoolers
- Special population (Children with disabilities)/ Pediatric vision impairment clinic
- Specialty contact lenses for children

#### In the Studt Center for Vision Therapy:

- Optometric Vision Therapy for children and adults
- Visual efficiency management
- Strabismus management
- Amblyopia management
- Acquired brain injury-related vision problems
- Learning-related vision problems
- Sports vision
- Individualized therapeutic approaches



We look forward to helping you manage your patients with Vision Therapy and Reading Therapy needs.

# SCCO Clinical Trials

SCCO undertakes clinical trials in a number of areas and we could use your help with recruiting subjects! Why refer to the Center for Vision Research? For one thing, your patients will receive leading edge diagnostic workups in several specialty areas. For example, SCCO is a leader in amblyopia research, having now conducted over 15 National Eye Institute funded studies on various approaches to treat amblyopia. Another example is dry eye, where SCCO has conducted more than 12 recent studies examining diagnostic procedures, testing new artificial tears, and evaluating topical formulations for their effect on vision.

Below we list several studies that are actively recruiting subjects. If you or your patients would like more information, our study coordinator will be glad to provide specific detail or to mail out a study flyer. Our study coordinator is Ms. Sue Parker. Her telephone is: 714-992-7817. Her email is sparker@scco.edu. Even if a patient cannot be screened or enrolled at the time of contact, we will place their name on a waiting list since we have ongoing need for similar subjects having various ocular conditions. We appreciate your referrals, and would certainly refer the patient back to your office for regular eyecare.

## Currently Enrolling for These Studies:

### Amblyopia and Binocular Vision Studies:

- 1. Increasing patching for amblyopia (ATS -15):** increase patching from 2 to 6 hours after amblyopic eye visual acuity has stabilized; need subjects age 3 to < 8 years.
- 2. Augmenting atropine treatment for amblyopia (ATS-16):** adding a plano lens to weekend atropine after amblyopic eyes visual acuity has stabilized; need subjects 3 - < 8 years of age.
- 3. Intermittent Exotropia (IXT II):** Intermittent exotropia; observation vs. 3 hours occlusion; need subjects 12 months to < 11 years.

### Non-Arteritic Ischemic Optic Neuropathy (NAION) Related to PDE5 Inhibitors:

SCCO is participating in a nationwide phase IV Prospective Case Crossover Study to assess whether PDE5 Inhibitor exposure in men with erectile dysfunction increases the risk for the development of NAION. The study is looking for adult men with suspected NAION. In order to participate, the study patients must be seen within 28 days of onset of decrease in vision and have taken a PDE5 inhibitor within the past year. Subjects will be compensated for their time and travel.

### Dry Eye Studies:

SCCO conducts numerous studies in the area of dry eye. Currently we are recruiting for the following studies:

- 1. Systane Balance:** Recruiting for 90 subjects with meibomian gland dysfunction. We need subjects > 18 years, with non-aqueous deficient dry eye. This is a six month study, with 8 visits. Subjects will receive free study artificial tears and will be compensated for their time and trouble.
- 2. Dry Eye and Reading:** The effects of dry eye on reading are not well documented. This study seeks dry eye subjects to evaluate symptoms from both an established dry questionnaire, the Ocular Surface Disease Index (OSDI) and a binocular vision symptom questionnaire, the Convergence Insufficiency Symptom Survey (CISS) to determine whether the two surveys can identify patients with dry eye related reading symptoms.

**Thank you for thinking of us for any of these study efforts!**

# The Studt Center for Vision Therapy is Now an Interactive Metronome® Provider

The Interactive Metronome (IM) is a brain-based rehabilitation assessment and training program developed to directly improve processing abilities that affect attention, motor planning, and sequencing. This, in turn, strengthens motor skills, including mobility and gross motor function, and many fundamental cognitive capacities such as planning, organizing and language.

The IM program provides a structured, goal-oriented training process that challenges the patient to precisely match a computer generated beat. Participants are instructed to synchronize various hand and foot exercises to a reference tone heard through headphones. The patient attempts to match the rhythmic beat with repetitive motor actions such as tapping his/her toes on the a floor sensor mat or hand clapping while wearing an IM glove with palm trigger. A patented audio and visual guidance system provides immediate feedback. The difference between the patient's performance and the computer generated beat is measured in milliseconds. The score provided indicates timing accuracy.

The Studt Center for Vision Therapy will be supplementing vision therapy and neuro- rehabilitation therapy with this device for our patient who we determine may benefit from such training. If you are interested in more information contact Dr. Carmen Barnhardt at [cbarnhardt@scco.edu](mailto:cbarnhardt@scco.edu).



## Reading Therapy Now Offered at the Eye Care Center



The Eye Care Center at the Southern California College of Optometry is now offering a reading remediation program for school-aged children under the direction of Dr. Eric Borsting. The Reading Clinic works with children from kindergarten through junior high age and provides both assessment and invention. We work with children who have dyslexia or a specific reading disability as well as children who are not reading up to their potential.

Children are assessed using informal reading inventories and based on the testing results, an invention program is designed. The intervention program utilizes web-based technology combined with traditional reading intervention methods to provide an optimal therapeutic environment for the child. All intervention is done with a one-to-one tutor to student ratio, which is a unique and highly effective tutoring environment. Our fee structure is quite affordable, especially when compared to similar reading programs and other commercial based centers.

If you have a school-aged patient who is struggling with reading and would like to refer to our Clinic or if you would like more information please call 714-992-7870.

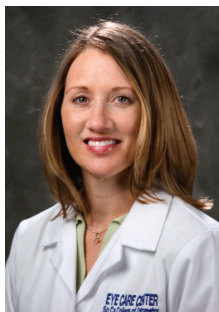


# Specialty Eye Care Services from the Specialists You've Learned to Trust

## STUDT CENTER FOR VISION THERAPY

**Carman Barnhardt, OD, MSED, FCOVD, FAAO, Dipl.**  
*Chief, Vision Therapy Services; Pediatric Vision Care  
Associate Professor*

Dr. Barnhardt is focusing her career on the management of binocular vision conditions, pediatric optometry and learning-related vision problems. She also serves as the Clinical Director for the Special Olympics Opening Eyes vision screening program.



## OCULAR DISEASE SERVICE

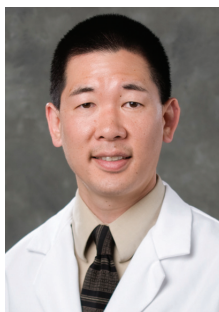
**David P. Sendrowski, OD, FAAO**  
*Chief, Ophthalmology Consultation  
and Special Testing Service  
Professor*

Dr. Sendrowski has lectured extensively, nationally and internationally, in the area of ocular disease diagnosis and management.

## PEDIATRIC VISION CARE SERVICE

**Raymond Chu, OD, MS, FAAO**  
*Chief, Pediatric Vision Care Services  
Assistant Professor*

Dr. Chu is concentrating his work in the Vision Therapy and Pediatric Optometry services and has been a co-investigator for several National Eye Institute (NEI) supported studies.



## LOW VISION SERVICE

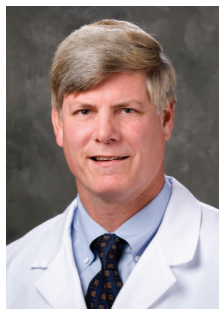
**Rebecca I. Kammer, OD, FAAO, Dipl.**  
*Chief, Low Vision Center  
Associate Professor*

Dr. Kammer has been instrumental in creating a Living Skills Vision Rehabilitation Center within the Eye Care Center.

## OCULAR PROSTHETICS

**Sunny M. Sanders, OD, FAAO**  
*Associate Professor*

Dr. Sanders created and is Coordinator of the Ocular Prosthetic service, providing comprehensive ocular prosthetic care and unique customized devices.



## DRY EYE INSTITUTE

**Jerry R. Paugh, OD, MS, PhD, FAAO**  
*Associate Dean for Research; Professor*

Dr. Paugh's research interests include ocular surface disease and dry eye, corneal epithelial barrier function, contact lenses, and ophthalmic drug delivery.

## SPECIALTY CONTACT LENSES

**Harue J. Marsden, OD, MS, FAAO, Dipl.**  
*Chief, Stein Cornea & Contact Lens Center  
Associate Professor*

Dr. Marsden has provided international lectures, publications and research in the areas of orthokeratology, contact lens management of the post-surgical cornea and laboratory testing.



## ELECTRODIAGNOSTIC SERVICE

**William H. Ridder, III, OD, MS, PhD, FAAO**  
*Professor*

Dr. Ridder runs the Electrodiagnostic Service at the Eye Care Center. He has published over 25 papers in referred journals and has given over 50 invited lectures at major meetings, nationally and internationally.